

# NEW · YORK · SOCIAL · DIARY

YOUR LINK TO SOCIETY

- [SOCIAL DIARY](#) • [PARTY PICTURES](#) • [CALENDAR](#) • [SOCIAL HISTORY](#) • [THE LIST/CAMEO](#) • [HOUSE](#) • [DINING](#) • [PHILANTHROPY](#)  
[ART SET](#) • [TRAVEL](#) • [ACROSS THE WORLD](#) • [GALLERY](#) • [GUEST DIARIES](#) • [CLASSIFIEDS](#) • [SHOPPING DIARY](#) • [ARCHIVES](#) • [SEARCH](#)

## Heating up



Geoffrey Beene National Scholarship winners.

*On January 8, at the Waldorf Astoria, YMA Fashion Scholarship Fund & Geoffrey Beene Foundation's annual benefit dinner gathered more than 1,000 members of the fashion industry to honor industry leaders and recognize the 131 YMA FSF scholarship recipients and eight Geoffrey Beene National Scholar finalists. The event raised \$1.85m and presented \$820,000 in scholarship grants.*

Honorees were **George Feldenkreis**, Founder & CE, Perry Ellis International Inc.; **Tamara Mellon OBE**, President, T. Mellon Enterprises LLC; and **Lana Cain Krauter**, Retailer, Sears Holdings Corp.



The scene at the Waldorf Astoria for YMA Fashion Scholarship Fund & Geoffrey Beene Foundation's annual benefit dinner



Attendees included event MC **Linda Fargo**, SVP of the Fashion Office & Store Presentation for Bergdorf Goodman, **Iris Apfel**, **Bridget Foley**, **Tom Hutton**, Trustee & CEO, Geoffrey Beene Foundation, **Karlie Kloss**, **Kimberly Ovitz**, **Jimmy Rosenfeld**, **Kenneth Wyse**, **John Bartlett**, **Joanna Coles**, and **Terry J. Lundgren**.



Founded in 1937, The YMA Fashion Scholarship Fund (FSF) is a national not-for-profit association consisting of influential members of the fashion community, dedicated to promoting education of the fashion arts and business by granting scholarships to talented students and facilitating internships, mentorships and career programs. YMA FSF also facilitates internships with prestigious fashion companies and provides career mentoring by prominent senior executives who serve on the YMA FSF Board.



Jimmy Rosenfeld



Karlie Kloss



Lana Cain Krauter

100% of the net profits from Geoffrey Beene, LLC, a global designer menswear brand, fund critical causes under the Geoffrey Beene Gives Back® (GBGB) philanthropic model. Since 2005, Geoffrey Beene, LLC together with the Geoffrey Beene Foundation have funded more than \$169,000,000 in value to critical causes, including more than \$132,000,000 to support revolutionary new research at the Geoffrey Beene Cancer Research Center at Memorial Sloan-Kettering Cancer Center. Other charitable causes include Alzheimer's, Heart Disease, the FSF and CFDA Educational Scholarships, Veterans Support, Protection of Women and Children, and Animal Welfare. The Geoffrey Beene Foundation has donated over \$4,500,000 to support the FSF through 2015. [www.geoffreybeene.com](http://www.geoffreybeene.com).



Larry Appel and Bridget Foley



Ken Wyse and Linda Fargo





Joanna Coles and Tamara Mellon



Lana Cain Krauter and Phil Krauter



Oscar and George Feldenkreis



John Bartlett

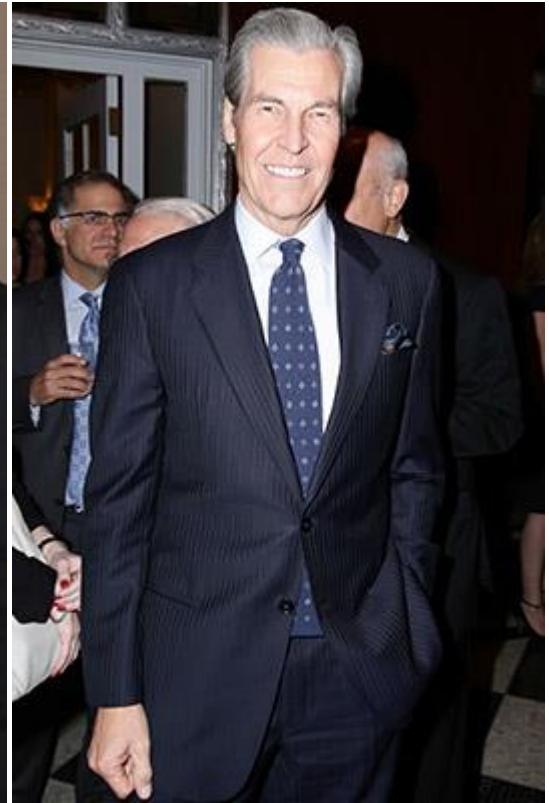


Linda Fargo, Iris Apfel, and Devin Bruce

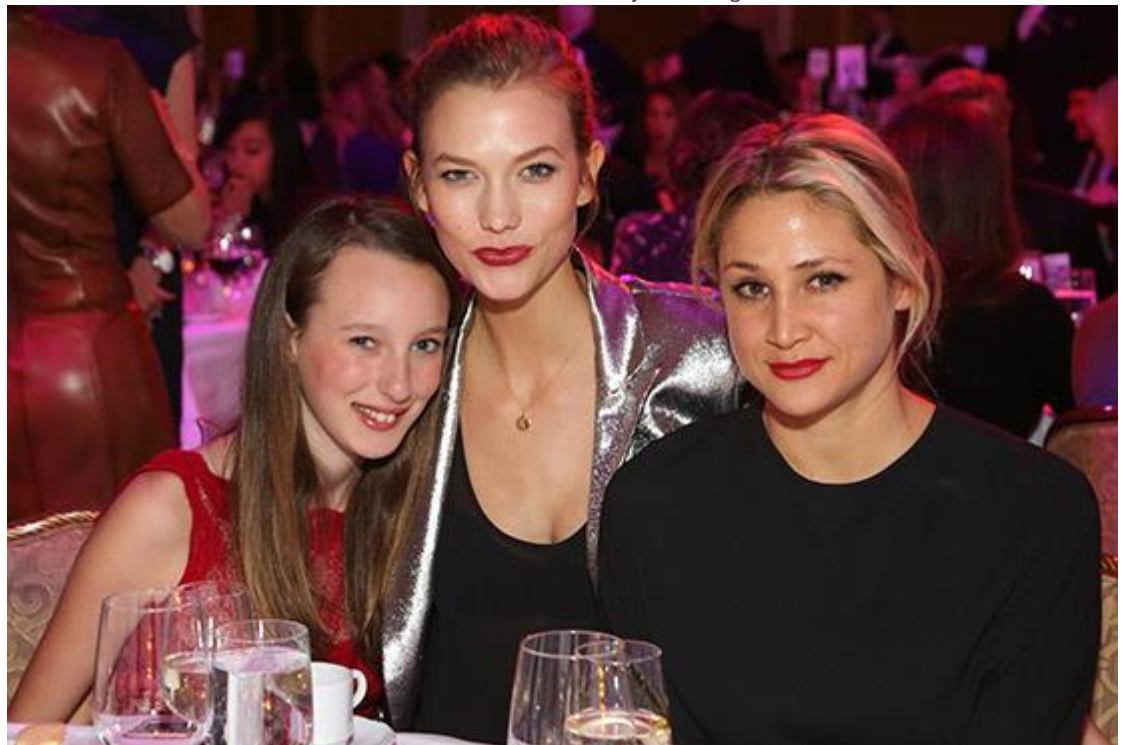




Mara and Tom Hutton



Terry J. Lundgren



Minty Mellon, Karlie Kloss, and Kimberly Ovitz